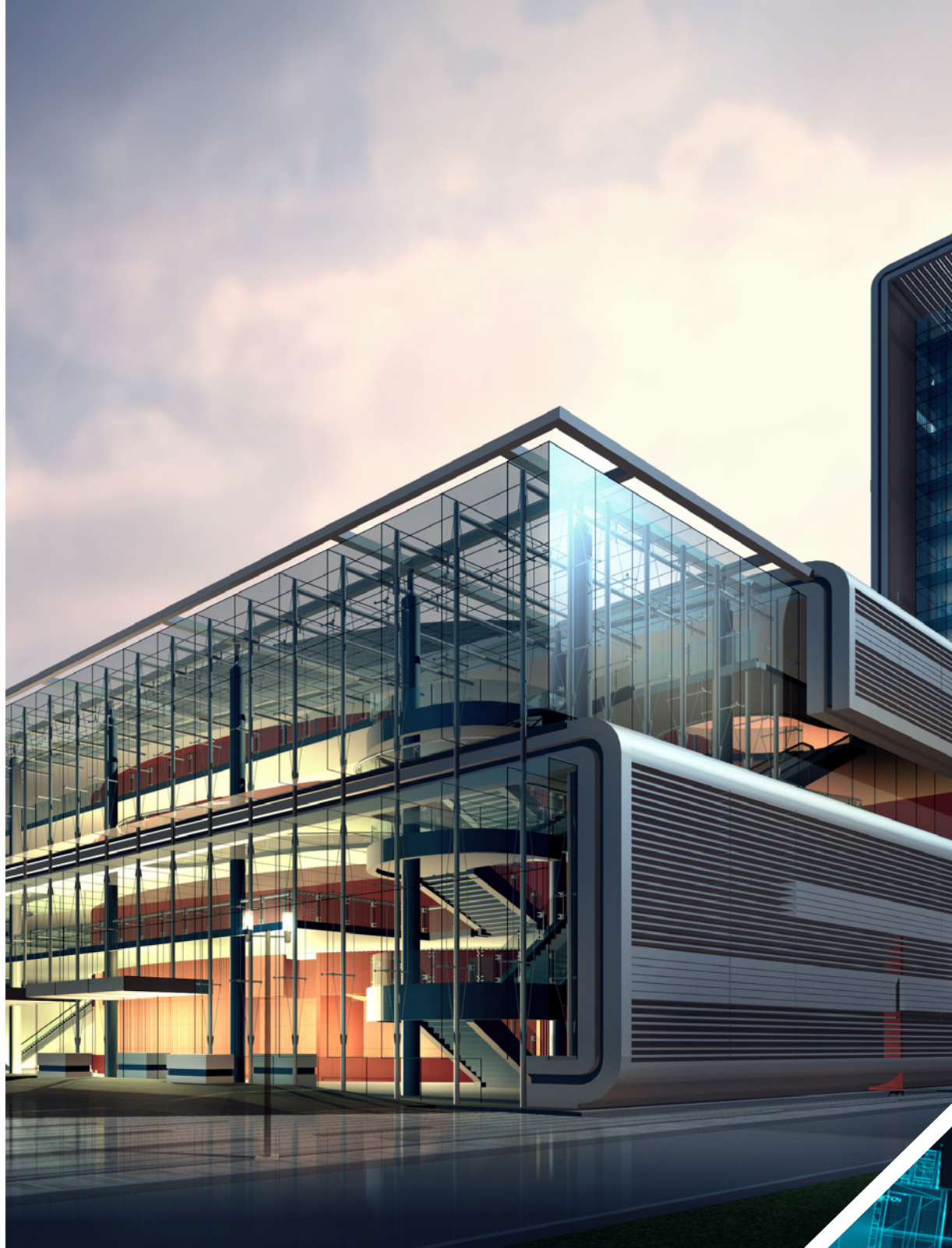


TUNGSRAM INNOVATIVE SOLUTIONS

Taking Property Management to the Next Level





Innovation is our heritage

Tungsham, initially founded back in 1896, served as one of the fundamental pillars of the second industrial revolution, and it was a key player of promoting and developing electric lighting. The company itself was established in the very year that marked the anniversary of the Hungarian millennial, and in this same year, Budapest was the second most dynamically growing city in the world, preceded only by Chicago. Ever since its inception, and even while the company was a part of General Electric, we relentlessly strive to expand our capabilities so that we can offer our customers alternative solutions, choices, and opportunities for their growth.



WIDENING OUR HORIZONS

Tungsum is a global, innovative brand, constantly seeking unique opportunities and valuable partners that match and expand our current portfolio. It provides fast access to the latest technologies, further solidifies its infrastructure, extends our capacity, and triggers growth. We opt for serving the global market as a premium European brand while we keep production and R&D in Europe.



ArchiFM, the new member of our family

The acquisition of ArchiFM has opened up countless new opportunities for both companies. The possibility to integrate the most successful Hungarian facility management software system into our portfolio adds an immense value to Tungsram, since its lighting optimization capabilities can complement our lighting solutions in any facility. By tying the knots with ArchiFM, we can now provide a vast array of smart solutions to our customers, such as installing and monitoring smart sensors, or keeping an accurate and up-to-date documentation of a lighting modernization performed. The new subsidiary, which, from now on, operates as Tungsram Innovative Solutions, has become a part of our family, which is a hallmark of inspiration, enhancement, cost and resource optimization and focuses on making a better present and future of mankind.

By merging with ArchiFM, the driving forces of the two industries have united: decades of knowledge, experience, and know-how have fused. While the key concept of ArchiFM remains intact, it can leverage Tungsram's mastery in all the non-core activities, thus building the new relationship even stronger.



The future lies in CAFM systems

CAFM systems simplify, optimize, digitalize property and facility management systems, thus making them more cost efficient.

Think about it –

- There is a shortage of skilled professionals
- All data can be accessed real-time
- Faster ROI than expected: lower costs of operation can be achieved
- System flexibility: compatibility with existing but isolated solutions
- Environmentally friendly and economical
- Eliminates the time spent unnecessarily: more efficient workflows



Over 20 years of improvement and development

ArchiFM is much more than just a piece of software. It features all asset and property management functionalities, and all the related maintenance modules. You can also use it on your mobile or on the web, which offers additional convenience, quality, and freedom of choice to its users.



The leading CAFM provider of Central Europe

ArchiFM achieved remarkable success in the Central European region in the past decade, and it also has a presence over the entire Europe, Japan, South-Africa, and has countless partners in four continents.

Why ArchiFM?

Because you will love it when you use it. It remains simple and user friendly, while there is a fully integrated and robust CAFM/CMMS system running in the background at full speed. In addition, it offers you the freedom of choice between web-based or mobile, on-premise or cloud, and it is interoperable with ArchiCAD, BIM/IFC, OrthoGraph (a 3D building surveying system) which no other facility management software can do.

Think about it –

- Full access to all your data anytime, anywhere
- On-premise or cloud SaaS (→ no need for initial investment)
- Integration with countless other systems (SAP, ERP, BMS/BAS/EMS, GIS)
- Centralized document repository
- Flexible and customizable
- We support all our partners with an extensive customer service
- Tungsram, which guarantees continuous innovation, uninterrupted operation, and financial stability



REFERENCES AND SUCCESSFUL INTERNATIONAL PROJECTS

MOL Group – Hungary, Slovakia / Audi production facility (Dome, Kraft FM) / National Bank of Hungary / OTP Facility Management / Graphisoft Park / MÜPA / Austrian Research Center / Campus Vejle Denmark / TODA Co. Japan

CONTACT US

Tungsram Innovative Solutions

1031 Budapest, Záhony u. 7. Graphisoft Park, Building G „I” épület

Tel. +36 1 445 0018

sales@archifm.net

TUNGSRAM™

Innovation is our heritage
EST. 1896



archifm.tungsr.com